

861v8 REFERENCE DIGITAL SURROUND CONTROLLER



OVERVIEW

Sitting at the heart of the ultimate 7.1 movie system, the 861v8 links all your audio sources at the highest quality. The unit's extensive connectivity includes a network socket for use with a Roon streaming system, and our patented digital filtering even makes standard resolution sources sound like high-resolution.

PRODUCT HIGHLIGHTS

The 861v8 links all your audio sources with advanced Digital Signal Processing (DSP) algorithms and loudspeaker management.

- Meridian Room Correction (MRC) adapts sound to your surroundings, measuring room acoustics and applying filters to smooth out resonances, increasing clarity and definition.
- A highly sophisticated bass management system optimises digital surround formats.
- Improved DSP feeding the analogue outputs provides a sweeter sound.
- Redesigned master oscillator and clocking circuitry reduces jitter by 40% compared to previous models, with enhanced performance from the unique, proprietary 'apodising' upsampling filter.

USER FEATURES

- 8-channel SpeakerLink outputs maximise performance with Meridian DSP Loudspeakers, making installation quicker and easier.
- Enhanced loudspeaker controls include Centre Elevation and Enhanced Bass Alignment with supported loudspeakers.

TECHNOLOGIES

MERIDIAN ROOM CORRECTION (MRC)

Room shape, size, furnishing and loudspeaker positions all influence the sound of any system. Meridian's Room Correction system uses powerful DSP to smooth out uneven room resonances for clearer sound and better imaging.

MERIDIAN'S SPEAKERLINK CONNECTION SYSTEM

SpeakerLink delivers the highest quality digital signals to Meridian's DSP Loudspeakers using discreet cables with simple connectors.

SMART SOURCE

Music, movies and other sources each need their own settings to play correctly. A Meridian system analyses the incoming content and automatically selects the correct group of settings for the source. You just sit back and enjoy the experience.

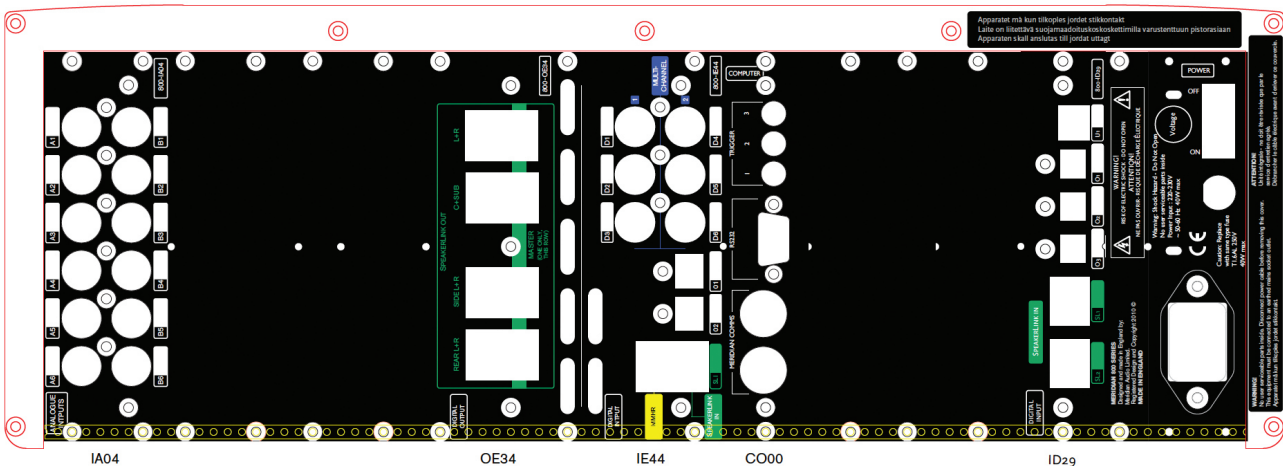
ENHANCEMENT TECHNOLOGIES

FIFO buffering, apodising filters and MHR (Meridian High Resolution) are employed to get the very best performance from all digital sources.

CONSTRUCTION & CONNECTIVITY

Meridian's 861v8 is also available as a rack mountable version with or without cover. Constructed from high grade materials, the 861v8 is finished in Silver or Black, or in one of the full range of Meridian Select colour options.

- The 861v8 includes an advanced linear power supply and a back panel with slots for both digital and analogue audio cards.



REAR PANEL LAYOUT

SPECIFICATION

CORE CARDS	<ul style="list-style-type: none">The following cards are fitted as standard inside a Meridian 861 Version 8:<ul style="list-style-type: none">IE44: 6x Digital Audio Inputs, Phono, D1 to D6 can be configured as 2x six-channel digital inputs with Meridian SmartLink performance. 2x Optical Audio Inputs, Toslink. SpeakerLink Input, RJ45. Meridian Multi-channel High Resolution (MMHR) Input, RJ45IA04: 6x Analogue Stereo Inputs, Phono. Can be configured as 2x six-channel analogue inputsID29: Digital Input card with 1x USB input, 3x Optical Audio Inputs, Toslink, 2x SpeakerLink inputs, RJ45OE34: 8x Digital Output, SpeakerLink. L, R, C, SUB, Side L, Side R, Rear L, Rear RCD20 & EF20: Internal (no rear panel) 48-bit DSP cards each containing two Motorola 56367 chips running in dual precision mode, each card offering 300 MIPS (million instructions per second) capability.CO00: Control computer card. Complete with Flash memory, RS232 port for control and status, 3x configurable trigger outputs and 2x Meridian CommsID41: Audio endpoint card with 1x Ethernet network socket (RJ45), enabling highest possible playback performance with Roon streaming system2 x OA18: Analogue output cards, each with 4 x XLR Outputs, configurable, with 24-bit, 192kHz DACs (2 cards fitted)
OPTIONAL CARDS	<ul style="list-style-type: none">One or two OAO8 Analogue Output cards, each with 4 x RCA Phono Outputs, configurable, with 24-bit, 192kHz DACs
CONTROLS	<ul style="list-style-type: none">Front-panel facia controls for: Source, DSP, Mute, Volume, and OffHinged control panel provides additional switches for: Display, Copy, Store, parameter menus, Assign, Calibrate, and Configure
DISPLAY	<ul style="list-style-type: none">20-character dot-matrix display: adjustable brightness and contrastLights for Dolby, Digital, THX, DTS, and MPEG
DIMENSIONS	<ul style="list-style-type: none">HEIGHT:175mm [6.9in] WIDTH: 489mm [18.9in]DEPTH:411mm [16.2in]
WEIGHT	<ul style="list-style-type: none">As standard – 16kg (35.2lbs)
POWER	<ul style="list-style-type: none">26W